

Brand-X Ascend Internal Route Post Installation Guide

In this guide we will install a 200mm Ascend XL internal route post to a hardtail frame. The process for fitting is the same for all the internal routed droppers but cable routing will vary depending on your frame so further tools may be required.

Tools / items required:

- Dropper post and lever
- 2mm hex key
- 3mm hex key
- 4mm hex key
- 5mm hex key
- Cable cutters
- Pliers
- Snips
- Cable ties
- Grease
- Gear inner cable and end crimp cap (supplied with seatpost)
- Outer cable and ferrules (supplied with seatpost)



Installation



1. Fully extend the dropper post by pushing down on the actuator.



2. Loosen the seatpost clamp bolts using a 5mm hex key.



3. Fit your saddle on the seatpost saddle clamp ensuring correct orientation. **Note:** The back of the seatpost has the laser etched height markings.



4. Tighten bolts (don't worry too much about saddle angle at this stage).



5. Insert your seatpost to the frame and tighten the seat clamp.

At this stage you will need to have a short ride and manually adjust the height of the seatpost until it is in a comfortable riding position in the fully extended position.

If the seatpost is fully inserted into the frame and is still too high, you will require a shorter drop seatpost.



6. With the seatpost now in the frame and adjusted, note down the distance from the top of the seat clamp to the bottom of the seatpost collar. You will need this later for final setup.



7. Fit your dropper lever to the handlebar using a 3mm hex key.



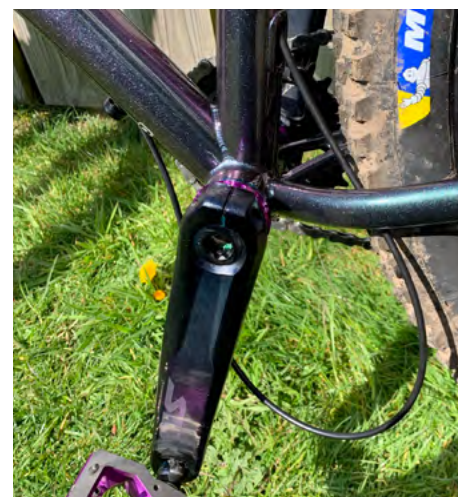
8. Remove the seatpost from your frame.



9. Install the outer cable into your frame following your frames cable routing. Leave some outer cable sticking out of the seat tube with most of the excess cable at the lever end. Cable should be left free to move in the cable guides at this stage.



10. Ensure the ferrule is on the cable and then push it into the bottom of the seatpost.



11. Insert the seatpost into the frame to the required depth, use the measurement from step 6 to get the correct height. You will end up with excess cable, gently pull it up to the lever end but be sure to leave enough slack for suspension movement etc.



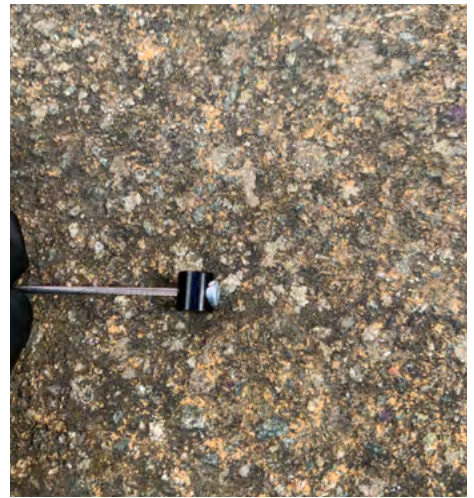
12. Line the outer cable up to the lever and determine the correct length required.



13. Double check cable routing is all correct then cut the outer cable to length and fit ferrule.



14. Remove the seatpost from the frame and push the outer cable back through the frame until the end is sticking out of the seat tube. You will likely end up with the outer cable down towards the downtube, this is completely normal at this stage.



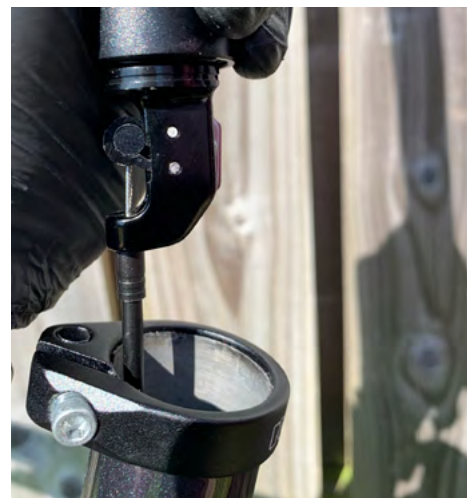
15. Take the cable head cover and install it on the inner cable.



16. Install the inner cable into the outer from the seat tube end. You will end up with a lot of excess inner cable at the front of the bike.



17. Insert the cable head into the dropper actuator.



18. Secure the outer cable into the bottom of the post and ensure all excess inner cable is at the front of the bike.



19. Apply grease to the outside of the seatpost.



20. Insert seatpost to required depth using the measurement from step 6.



21. Carefully pull the outer cable and get it up close to the lever.



22. Take the small cable barrel and undo the grub screw a few turns until it is no longer blocking the hole.



23. Move the lever to the closed position and then place the barrel into the lever. **Note:** You cannot let go of the barrel until the cable is installed so its handy to use a hex key to hold it in place.



24. Route the inner cable through the lever and then through the barrel.



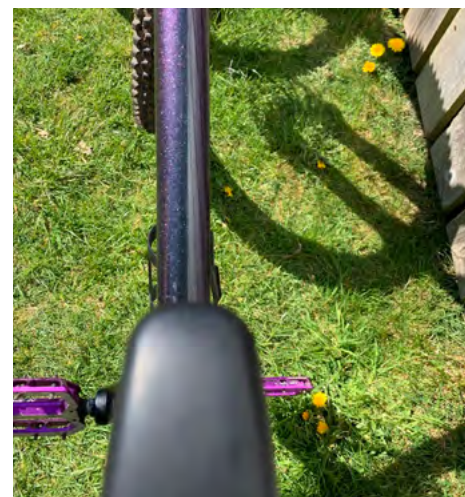
25. All the excess inner cable should now be sticking out of the lever and the outer cable should be in position. At this stage it is worth double checking your outer cable routing is good.



26. Pull the inner cable tight and tighten the grub screw.



27. You can now push the lever and push down on the post to see it compress and then push the lever again to extend. Repeat 5 times. If the post is not functioning or the lever feels sloppy, check your cable tension.



28. When you are happy the seatpost is functioning correctly, trim the excess inner cable using cable cutters.

29. Push the cable crimp on over the end of the cable then squeeze with pliers.

30. Gently loosen the seat clamp bolt and ensure saddle is straight then retighten.



31. Adjust saddle angle using the clamp bolts and when happy fully tighten bolts.

32. Tidy up any cables using cable ties and snip off ends.

33. Your seatpost is now fully fitted and ready to ride.